



# MES

- Real time allocation on jobs + part quantities
- Production management (productive & unproductive tasks)
- Job line report
- Non-conformity management
- Supplier evaluation
- Measuring device
- KPI and quality indicator

# WORKPLAN AND RADAN

WORKPLAN is an intelligent Project Management solution combining Sales & Production Management and MES functionality within a single database. As the backbone of your manufacturing company, WORKPLAN becomes the main tool centralising your company's data in order to improve your production management. For example, machine events, monitoring, CMMS, CAM supervision, production workflow, and part traceability on the shop floor.

## RADAN INTEGRATION

WORKPLAN utilises the powerful dedicated calculation system for sheet metal – Radquote – to build prices with material costs and production times. It also allows all documents to be illustrated with images of the parts. The direct link between RADAN and WORKPLAN guarantees fluent data exchange to improve productivity.

- Sheet metal requirement estimation
- Import parts to be produced in RADAN
- Import stock per material, thickness and sheet size
- Sync programs directly in WORKPLAN to manage the production

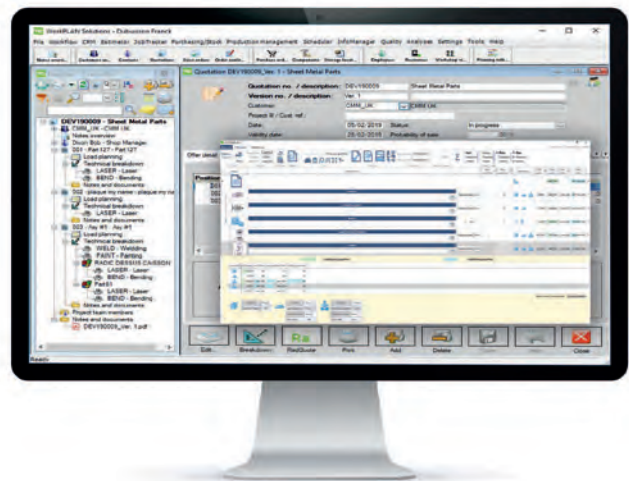


## STOCK AND NEST

WORKPLAN offers a simple and efficient stock management solution for sheet metal nests including stock reception/withdrawal, inventory, scrap management and part traceability. Interfaced with the CAM programming software, data reporting in WORKPLAN and deduction of sheets consumed is available with just a few clicks.

## ACTIVITY BASKET

When several tasks from different projects are performed simultaneously within a single production operation (punching, laser cutting, etc.), it is hard to monitor and assign real time activities without unbalancing job reports. WORKPLAN includes the concept of an activity basket where it is possible to create a basket of operations grouped by service, and manage the cost distribution according to your needs.







- Simple and user-friendly
- Industry specific sheet metal features
- Fast geometric construction
- Increased productivity
- Reliable data exchange in DXF, DWG and IGES
- Facilitates collaboration between contractors and subcontractors
- Full automation

# HIGHLY EFFICIENT CAD SPECIALISED FOR SHEET METAL

A central element of your CAM system, RADAN 2D provides users with a complete solution for 2D drawings which incorporates sheet metal industry expertise.

Its many features and easy-to-use graphical interface make RADAN 2D a reliable and economical solution. One of the main requirements of a CAM system used in a production environment is the ability to support inaccurate 3rd party data.

RADAN 2D offers a quick and simple method to repair or simplify geometry imported from other systems.

With the addition of the optional package 'parametrics' you can easily generate variations on recurring parts in a fully automatic process.

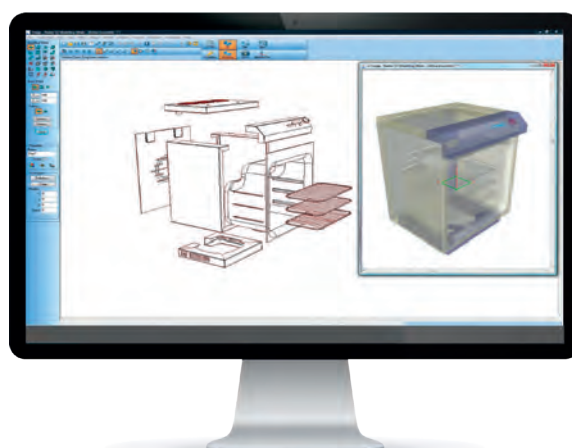
As RADAN 2D can be driven manually, or from a simple spreadsheet, it is possible to automatically create flat patterns of parts to produce and create compatible output that can be used by the rest of the RADAN product portfolio.

## 3D MODELLING, PART UNFOLDING, AND SHEET METAL FEATURES

RADAN 3D is a fully integrated software application which provides expert functionality in the field of sheet metal CAD modelling. Simple to use, and fast, RADAN 3D provides unmatched productivity for designing your parts and sheet metal assemblies.

Unfolding, notching, managing corners and bend allowance are all standard features when creating geometry using RADAN 3D. This module of the software suite gives the user very easy access to the world of 3D modelling which is essential to companies working in sheet metal.

- Design of parts and assemblies using sheet metal specialist construction methods
- Rapid generation of complex panels
- Automatic unfolding assistant
- User-defined corner solutions
- Automatic unfolding of imported 3D models fully integrated into the software suite



From an external model, RADAN 3D is able to rebuild geometry with sheet metal features.





- Management of toolsets and dies
- Supports advanced punching functions
- Automatic or manual unloading of parts
- Graphical reports
- Fully automatic multi-part nesting
- Optimised punching sequence
- Common slitting and automatic repositioning of clamps



- Real-time cut in connection with your production management
- Reduced start up-time
- Quick and easy transfer of production from one machine to another